



Green Country Integrated

GCI, A Small Business You Can Rely On ^(SM)

Solution: Supply Chain Management

~ January, 2011 ~

Please visit us at www.greencountryintegrated.com



About GCI

Green Country Integrated (GCI) serves the government, prime contractors and small businesses throughout the continental United States and its territories as a professional services organization with offices in Northern California and the Washington DC area. GCI is a Service Disabled Veteran (S.D.V.O.S.B) / Woman Owned (W.O.B.) / Small Business Enterprise S.B.E. you can rely on.^(SM)



2011 Growth Plan

The cornerstone of GCI's strategic objective is growth. As part of our solid plan for growth, one of the tactics is mergers and acquisition. As such, we have just executed an asset purchase of Combined Effort, Inc. "CEI" and are in the process of a merger with another firm "PE" to be disclosed. All of the contracts in each of these firms are being novated to Green Country Integrated. When this process is complete, the total work in progress and past performance will include over 30 Federal and State contracts with over \$8 million in contracts. Combined Effort, Inc. will remain a separate and signatory construction company.

Supply Procurement and Supply Chain Management - GCI is in the process of expanding its base of products we can provide to contractors and government. Our goal is to offer an array of products and services utilizing several distribution centers throughout the United States. By doing business with an SDVOSB and a WOB, we help move companies and agencies toward their socioeconomic spending goals. Examples include: heavy equipment rental, transportation, satellite truck emergency response, green pipe, environmental mats, solar panels, headstone support systems... And all aspects of supply chain management here in the United States, GUAM & Hawaii.



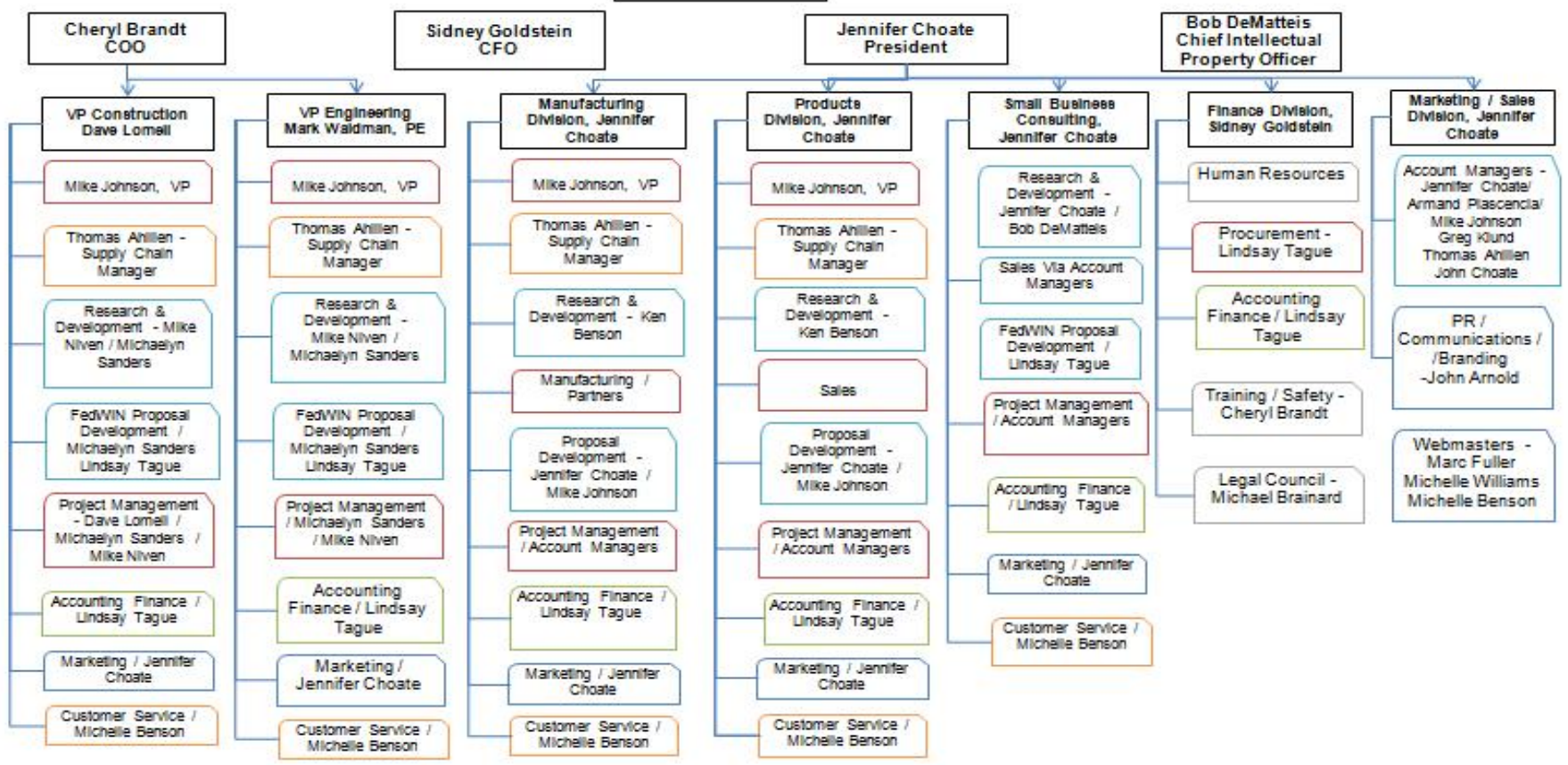
Organizational Chart



"Delivering EXCELLENCE is the standard we work for in all we do"

Divisional Organizational Structure

Cheryl Brandt
CEO





Products & Services

GCI Proudly Offers the Following In Our Expanding Portfolio of Products and Services

Construction:	Engineering:	Products:	Management Consulting:
Safety	Civil	Heavy Equipment Rental & Sales	Supply Chain Management
Infrastructure	Environmental	Headstone Support	Construction Management
Earthwork	HAZMAT	Green Flooring	FedREADY Small Business Consulting
Demolition	Remediation	Green Piping	FedWIN Proposal Writing
	SWPP	Construction Supplies	SmallBusiness Outreach / Utilization



Supply Chain Experience **Counts**

Leadership Experience:

Thomas Ahillen, Supply Chain Manager with 43 years of surface transportation experience including 18 years of Micronesia / GUAM business and government affairs.

Location Experience:

CONUS, GUAM, Hawaii, Alaska, Japan, China, Korea, Philippines, Taiwan, Indonesia, Republic of Palau, Commonwealth of Northern Marianas, Canada, Puerto Rico, Federated States of Micronesia, and Republic of Marshal Islands.



Supply Chain Management

Thomas Ahillen, Supply Chain Manager
Mike Johnson, Account Executive

Purchasing/ Estimating	Negotiations	Negotiations	Documentation
Pricing	Logistics/ distribution	Government Relations	Intermodal sea, rail, and highway
Estimating	Port Operations	Connecting Carrier Negotiations	Claims Management
Value Engineering	Terminal / Warehouse Operations	Customs Interface	Personnel Management
	Equipment Control and Maintenance	Customer Service	Sales & Marketing



Case Study

As a contractor with the DoD in Guam, the leadership of the GCI Supply Chain Management Division was able to save in excess of 20% for clients with his recommended Supply Chain plan of action.

These cost savings were accomplished through:

- 1. Negotiation of Project rate**
- 2. Consolidation of cargo**
- 3. Proper fixed delivery cost in Guam**
- 4. Assurance that all documentation had proper wording so that there was no taxation issues or stalls in delivery**



Case Study

Supply Chain Manager as the Logistical Point of contact for the movement of cargo to a military contract in Sasebo, Japan included:

- 1. The movement of personnel**
- 2. The movement of equipment and supplies**
- 3. Then return of personnel and equipment**

Leadership was able to complete all coordination for the move including consolidation, equipment rental, supplies consolidation and customs in both Japan and USA.

The project came in under budget by 11%; was completed ahead of schedule; and gained a 2nd job for the client because of their work and the efficiency of the logistics.



What Past Clients Have Said of GCI Supply Chain Manager...

“It’s been a pleasure working with you during your time on Guam. I have always found you to be very professional and willing to listen to viewpoints that may not always coincide with your own. I very much appreciate the support and assistance you have given me and AMBYTH over the years.”

**~Greg David
Ambyth Shipping & Trading, Inc**

“Mr. Ahillen has worked in the capacity of consultant to Day & Zimmermann Guam for a little over 18 months. We entered an agreement primarily due to Mr. Ahillen’s in-depth knowledge of commercial shipping and seaport operations. As it turned out Mr. Ahillen brought much more to the table. His breadth of understanding of the current economic and political climate in Micronesia and Asia is outstanding. Furthermore, his relationships with various Micronesian leaders, e.g. the Governor of Guam, and his network of western Pacific businessmen has proven invaluable in furthering D&Z Guam’s interests in the area.”

**~Thomas W. Yelvington
President
Day & Zimmermann Guam**

“Thomas Ahillen has the unique balance of local experience/cultural understanding and knowledge of the national procurement process required to move projects forward.”

**~John D. Ulibarri, PE
Assistant Vice President
TRANSYSTEMS**

“We consider Thomas Ahillen to be a premier logistics and equipment provider, particularly when dealing with Guam and Pacific island nations, including Majuro, Pohnpei and Palau. We expect our relationship with Thomas Ahillen will continue.”

**~ R. M. Egan, Jr.
President**



Certifications & Licenses

Construction:	Engineering:	Certifications:	Under Application:
General Bldg. Cont. #952733	Civil Engineering Ca #38905	SDVOSB (Federal) CVE (Veterans Affairs)	SF LBE
	Hazmat & Asbestos	DVBE (CA)	WBE (8M)
	Certified Profession in Erosion and Sediment Control	Small Business	
	SWPP	Self Cert WOB	



GCI Credo:

“EXCELLENCE in all we do. It’s either Excellent or not.”

To achieve Excellence, we at GCI are thoughtful in all we do. We believe that thoughtfulness is the foundation for joy, bridging personal satisfaction, customer loyalty and bottom line profitability. We value loyalty and know that perception is key.

Excellence in all we do... and when that is challenged, it is our standard to meet problems with positive and immediate reaction, coupled with exaggerated responses, and overwhelming solutions.



Locations

Green Country Integrated DUNS# 829835607

Toll Free: 1-800-720-4660

Jamestown, CA: 1-209-984-8993

San Francisco, CA: 1-415-754-9355

Washington, DC: 1-703-473-5083

Fax: 1-800-540-1789

Mailing Address:

Green Country Integrated

P.O. Box 794

Sonora, CA 95370